

ACCESSORI DI FORATURA E MASCHIATURA

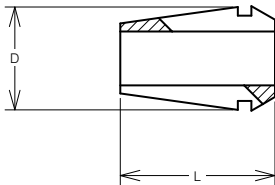
DRILLING AND TAPPING ACCESSORIES



ACCESSORI DI FORATURA E MASCHIATURA DRILLING AND TAPPING ACCESSORIES

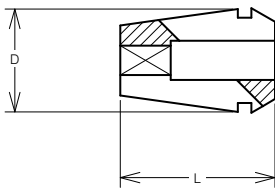
PINZE ER DIN 6499
ER COLLET DIN 6499

PINZE ER DIN 6499/B ER COLLETS DIN 6499/B



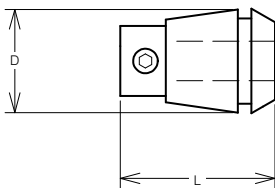
CODICE CODE	CAPACITÀ SIZE RANGE	SERRAGGIO GRIPPING RANGE	D	L
411208.100	1-5	-0,5	8,5	13,5
411211.100	1-7	-0,5	11,5	18
411216.100	1-10	-1	17	27
411220.100	2-13	-1	21	31
411225.100	2-16	-1	26	35
411232.100	3-20	-1	33	40
411240.100	4-26	-1	41	46

PINZE ER DI MASCHIATURA CON QUADRO ER TAPPING COLLETS WITH SQUARE



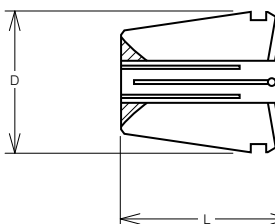
CODICE CODE	Ø MAX GAMBO MASCHIO MAX TAP SHANK Ø	PER MASCHI FOR TAPS	D	L
411211.200	6	M3-M8	11,5	18
411216.200	8	M3-M10	17	27
411220.200	10	M3-M12	21	31
411225.200	12	M3-M16	26	35
411232.200	16	M4-M20	33	40
411240.200	20	M5-M27	41	46

PINZE ER DI MASCHIATURA CON COMPENSAZIONE A TRAZIONE ER TAPPING COLLETS WITH TRACTION COMPENSATION



CODICE CODE	Ø MAX GAMBO MASCHIO MAX TAP SHANK Ø	COMPENSAZIONE COMPENSATION	D	L
401216.200	6	7	17	27
401220.200	7	7	21	31
401225.200	10	8	26	34
401232.200	12	10	33	43
401240.200	16	13	41	54

PINZE ER A TENUTA STAGNA WATERTIGHT ER COLLETS

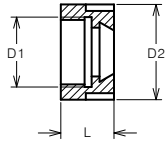
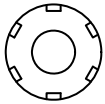


CODICE CODE	CAPACITÀ CAPACITY	SERRAGGIO GRIPPING RANGE	D	L
411211.10R	1 ÷ 7	0,5	11,5	18
411216.10R	1 ÷ 10	0,5	17	27,5
411220.10R	1 ÷ 13	0,5	21	31,5
411225.10R	1 ÷ 16	0,5	26	34
411232.10R	2 ÷ 20	0,5	33	40
411240.10R	4 ÷ 26	0,5	41	46

ACCESSORI DI FORATURA E MASCHIATURA DRILLING AND TAPPING ACCESSORIES

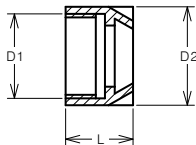
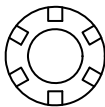
GHIERE E MANICOTTI A CAMBIO RAPIDO
NUTS AND QUICK CHANGE SLEEVES

GHIERE ER TIPO UM ER UM NUTS



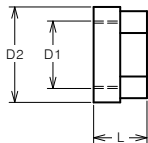
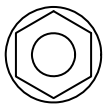
CODICE CODE	CODICE PINZA COLLET CODE	CODICE CHIAVE WRENCH CODE	D1	D2	L
414822.016	411216.100	410316.000	M22x1,5	28	17
414825.020	411220.100	410320.000	M25x1,5	34	19
414832.025	411225.100	410325.000	M32x1,5	42	20
414840.032	411232.100	410332.000	M40x1,5	50	22

GHIERE ER TIPO MINI ER MINI NUTS



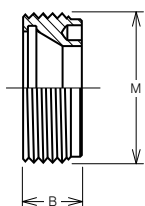
CODICE CODE	CODICE PINZA COLLET CODE	CODICE CHIAVE WRENCH CODE	D1	D2	L
414510.008	411208.100	410208.000	M10x0,75	12	11
414513.011	411211.100	410211.000	M13x0,75	16	11
414519.016	411216.100	410216.000	M19x1	22	17
414524.020	411220.100	410220.000	M24x1	28	19
414530.025	411225.100	410225.000	M30x1	35	20

GHIERE ER TIPO ESAGONALE ER NUTS EXAGONAL TYPE



CODICE CODE	CODICE PINZA COLLET CODE	D1	D2	L
414614.011	411211.100	M14x0,75	19	11
414622.016	411216.100	M22x1,5	28	17
414625.020	411220.100	M25x1,5	34	19

GHIERE ER CON FILETTO ESTERNO ER NUTS WITH EXTERNAL THREAD

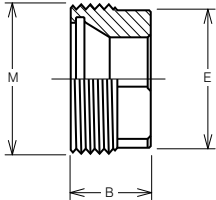


CODICE CODE	B	M
414718.011	6	18x1
414724.016	8	24x1
414728.020	11	28x1.5
414732.025	12,5	32x1.5
414740.032	14	40x1.5

ACCESSORI DI FORATURA E MASCHIATURA DRILLING AND TAPPING ACCESSORIES

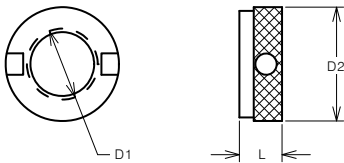
GHIERE E MANICOTTI A CAMBIO RAPIDO
NUTS AND QUICK CHANGE SLEEVES

GHIERE ER CON FILETTO ESTERNO A PRESA ESAGONALE ER NUTS WITH EXTERNAL THREAD



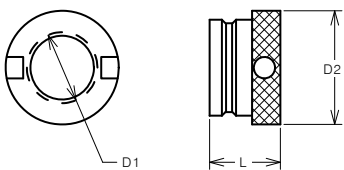
CODICE CODE	E	B	M
414718.011E	15	9	18x1
414724.016E	19	12	24x1
414728.020E	22	13	28x1.5
414732.025E	27	16.5	32x1.5
414740.032E	32	19	40x1.5
414750.040E	42	19	50x1.5

GHIERE DIN 6327 DIN 6327 NUTS



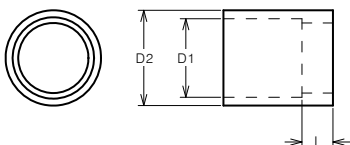
CODICE CODE	D1	D2	L
414308.000	Tr8x1	14,8	5
414310.000	Tr10x1,5	17,8	6
414312.000	Tr12x1,5	19,7	6
414316.000	Tr16x1,5	24,6	12
414320.000	Tr20x2	31,6	12
414328.000	Tr28x2	39,6	12

GHIERE DIN 6327 PER MANICOTTI A CAMBIO RAPIDO DIN 6327 NUTS FOR QUICK CHANGE SLEEVES



CODICE CODE	CODICE MANICOTTO SLEEVE CODE	D1	D2	L
414416.000	1	Tr16x1,5	26	18,5
414420.000	1	Tr20x2	33	20
414428.000	2	Tr28x2	42	22

MANICOTTI A CAMBIO RAPIDO (TIPO CORTO) QUICK CHANGE SLEEVES (SHORT PATTERN)

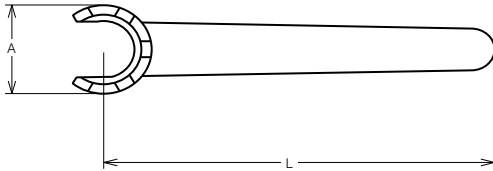


CODICE CODE	PER MANDRINI DIN 55058 FOR DIN 55058 SPINDLES	D1	D2	L
402922.016	Ø16	22	27	9,5
402928.020	Ø20	28	34	11
402937.028	Ø28	34,5	41	12

ACCESSORI DI FORATURA E MASCHIATURA DRILLING AND TAPPING ACCESSORIES

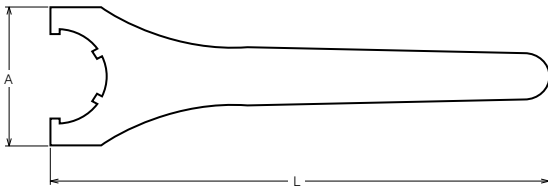
CHIAVI DI SERRAGGIO DIN 6499
CLAMPING WRENCHES DIN 6499

CHIAVI ER PER GHIERE MINI ER MINI NUT WRENCHES



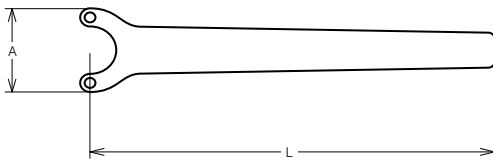
CODICE CODE	CODICE GHIERA NUT CODE	A	L
410208.000	414510.008	13	75
410211.000	414513.011	17	96
410216.000	414519.016	23	118
410220.000	414524.020	28	130
410225.000	414530.025	35	141

CHIAVI ER PER GHIERE ER WRENCHES

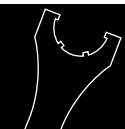


CODICE CODE	CODICE GHIERA NUT CODE	A	L
410316.000	414822.016	50	160
410320.000	414825.020	55	180
410325.000	414832.025	65	210
410332.000	414840.032	75	250
410340.000	414850.040	90	290

CHIAVI ER PER GHIERE CON FILETTO ESTERNO ER WRENCHES - EXTERNAL THREAD



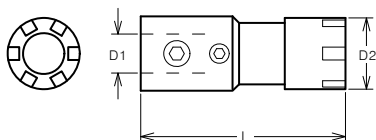
CODICE CODE	CODICE GHIERA NUT CODE	A	L
410411.000	414718.011	19	96
410416.000	414724.016	25	118
410420.000	414728.020	28	123
410425.000	414732.025	30	139



ACCESSORI DI FORATURA E MASCHIATURA DRILLING AND TAPPING ACCESSORIES

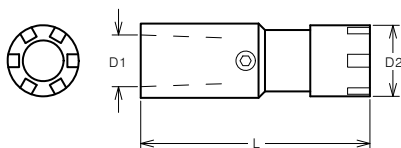
MANDRINI PORTA PINZA
SPINDLE COLLET CHUCK

MANDRINI PORTA PINZA ATTACCO CILINDRICO SPINDLE COLLET CHUCK, CYLINDRICAL CONNECTION



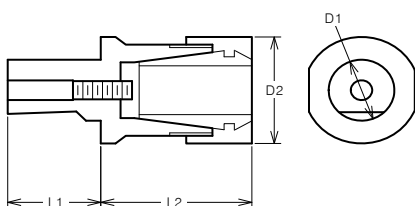
CODICE CODE	CODICE PINZA COLLET CODE	CODICE CHIAVE WRENCH CODE	D1	D2	L
403005.008	411208.100	410208.000	5	12	31
403007.008	411208.100	410208.000	7	12	39,5
403007.011	411211.100	410211.000	7	16	44
403012.016	411216.100	410216.000	12	22	61
403012.020	411220.100	410220.000	12	28	68
403015.020	411220.100	410220.000	15	28	64,5

MANDRINI PORTA PINZA ATTACCO CONO DIN SPINDLE COLLET CHUCK, TAPER DIN 238 CONNECTION



CODICE CODE	CODICE PINZA COLLET CODE	CODICE CHIAVE WRENCH CODE	D1	D2	L
403712.111	411211.100	410211.000	B12	16	63
403712.116	411216.100	410216.000	B12	22	55
403716.116	411216.100	410216.000	B16	22	85
403716.120	411220.100	410220.000	B16	28	80
403718.120	411220.100	410220.000	B18	28	74

MANDRINI PORTA PINZA ATTACCO WHISTLE NOTCH SPINDLE COLLET CHUCK, WHISTLE NOTCH TYPE

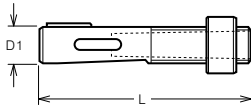


CODICE CODE	CODICE PINZA COLLET CODE	CODICE CHIAVE WRENCH CODE	D1	D2	L1	L2
407007.008	411208.100	410208.000	7	12	11	20
407010.011	411211.100	410211.000	10	16	15	24,5
407014.016	411216.100	410216.000	14	22	21	36,5
407016.020	411220.100	410220.000	16	28	24	41,5
407020.025	411225.100	410225.000	20	35	30	46
407020.125	411225.100	410325.000	20	42	30	46
407025.132	411232.100	410332.000	25	50	37	55

ACCESSORI DI FORATURA E MASCHIATURA DRILLING AND TAPPING ACCESSORIES

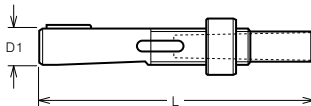
PORTA UTENSILI FORATURA
DRILLING TOOL HOLDERS

ASTUCCI REGISTRABILI (TIPO CORTO) DIN 6327 ADJUSTABLE ADAPTERS (SHORT PATTERN) DIN 6327



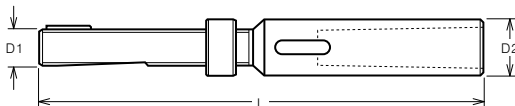
CODICE CODE	CONO MORSE MORSE TAPER	D1	L
402116.001	1	Tr16x1,5	85
402120.001	1	Tx20x2	88
402128.002	2	Tr28x2	95
402136.002	2	Tr36x2	118
402136.003	3	Tr36x2	118

ASTUCCI REGISTRABILI (TIPO LUNGO) DIN 6327 ADJUSTABLE ADAPTERS (LONG PATTERN) DIN 6327



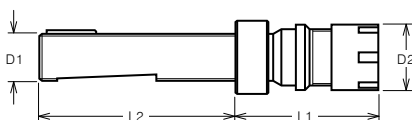
CODICE CODE	CONO MORSE MORSE TAPER	D1	L
402216.001	1	Tr16x1,5	110
402220.001	1	Tx20x2	113
402228.002	2	Tr28x2	120

ASTUCCI REGISTRABILI (MAGGIORATI) DIN 6327 ADJUSTABLE ADAPTERS (STEPPED PATTERN) DIN 6327



CODICE CODE	CONO MORSE MORSE TAPER	D1	D2	L
402312.001	1	Tr12x1,5	18	135
402316.002	2	Tr16x1,5	25	179
402320.002	2	Tr20x2	28	182
402328.003	3	Tr28x2	36	212

MANDRINI PORTA PINZA SPINDLE COLLET CHUCK

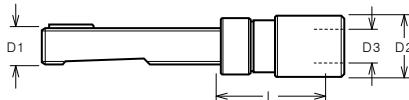


CODICE CODE	CODICE PINZA COLLET CODE	CODICE CHIAVE WRENCH CODE	D1	D2	L1	L2
403112.111	411211.100		Tr12x1,5	19	36	50
403116.111	411211.100		Tr16x1,5	19	36	73
403116.116	411216.100		Tr16x1,5	28	52	73
403120.120	411220.100		Tr20x2	34	62	73
403208.108	411208.100	410208.000	Tr8x1	12	35	40
403208.111	411211.100	410211.000	Tr8x1	16	43	40
403210.111	411211.100	410211.000	Tr10x1,5	16	45	50
403212.116	411216.100	410216.000	Tr12x1,5	22	52	50
403216.116	411216.100	410216.000	Tr16x1,5	22	52	73
403216.120	411220.100	410220.000	Tr16x1,5	28	57	73

ACCESSORI DI FORATURA E MASCHIATURA DRILLING AND TAPPING ACCESSORIES

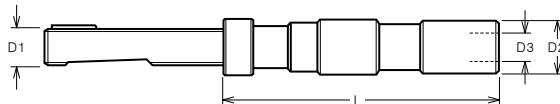
PORTA UTENSILI MASCHIATURA
TAPPING TOOL HOLDERS

MANDRINI A CAMBIO RAPIDO CON COMPENSAZIONE QUICK CHANGE CHUCK WITH LENGTH COMPENSATION



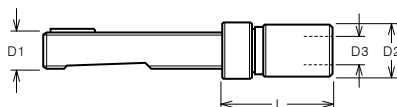
CODICE CODE	BUSSOLA ADAPTOR	BUSSOLA FRIZION SAFETY ADAPTOR	COMP ASSIALE AXIAL COMPENS	GRAND SIZE	PER MASCHI FOR TAPS	D1	D2	D3	L
403316.200	404100.200	404200.200	+/- 6,5	0	M1-M10	Tr16x1,5	26	13	50
403316.201	404101.200	404201.200	+/- 7,5	1	M3-M12	Tr16x1,5	36	19	52
403320.201	404101.200	404201.200	+/- 7,5	1	M4-M14	Tr20x2	36	19	52
403328.202	404102.200	404202.200	+/- 12,5	2	M8-M20	Tr28x2	53	31	76

MANDRINI A CAMBIO RAPIDO CON COMPENSAZIONE QUICK CHANGE CHUCK WITH LENGTH COMPENSATION



CODICE CODE	BUSSOLA ADAPTOR	BUSSOLA FRIZION SAFETY ADAPTOR	COMP ASSIALE AXIAL COMPENS	GRAND SIZE	PER MASCHI FOR TAPS	D1	D2	D3	L
403412.200	404100.200	404200.200	+/-15	0	M1-M10	Tr12x1,5	23	13	112
403416.200	404100.200	404200.200	+/-15	0	M1-M10	Tr16x1,5	23	13	112
403416.201	404101.200	404201.200	+/-20	1	M3-M12	Tr16x1,5	35	19	139
403420.201	404101.200	404201.200	+/-20	1	M3-M12	Tr20x2	35	19	119
403428.202	404102.200	404202.200	+/-20	2	M8-M20	Tr28x2	30	31	163

MANDRINI A CAMBIO RAPIDO QUICK CHANGE CHUCK

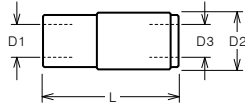


CODICE CODE	BUSSOLA ADAPTOR	BUSSOLA FRIZION SAFETY ADAPTOR	GRAND SIZE	PER MASCHI FOR TAPS	D1	D2	D3	L
403516.200	404100.200	404200.200	0	M1-M10	Tr16x1,5	23	13	45
403520.201	404101.200	404201.200	1	M3-M12	Tr20x2	32	19	49
403528.202	404102.200	404202.200	2	M8-M20	Tr28x2	50	21	66

ACCESSORI DI FORATURA E MASCHIATURA DRILLING AND TAPPING ACCESSORIES

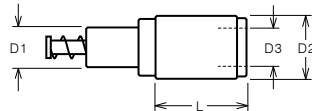
PORTA UTENSILI MASCHIATURA
TAPPING TOOL HOLDERS

MANDRINI A CAMBIO RAPIDO QUICK CHANGE CHUCK



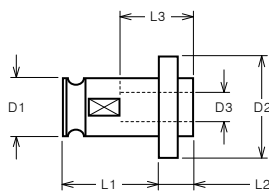
CODICE CODE	BUSSOLA ADAPTOR	BUSSOLA FRIZION SAFETY ADAPTOR	GRAND SIZE	PER MASCHI FOR TAPS	D1	D2	D3	L
403607.200	404100.200	404200.200	0	M1-M5	7	23	13	51
403612.200	404100.200	404200.200	0	M1-M8	12	23	13	51

MANDRINI A CAMBIO RAPIDO CON COMPENSAZIONE QUICK CHANGE CHUCK WITH LENGTH COMPENSATION



CODICE CODE	BUSSOLA ADAPTOR	BUSSOLA FRIZION SAFETY ADAPTOR	COMP ASSIALE AXIAL COMPENS	GRAND SIZE	PER MASCHI FOR TAPS	D1	D2	D3	L
403915.200	404100.200	404200.200	+/-6,5	0	M1-M10	15	26	13	37
403920.201	404101.200	404201.200	+/-7,5	1	M3-M12	20	36	19	39
403925.202	404102.200	404202.200	+/-12,5	2	M8-M20	25	53	31	63

BUSSOLE A CAMBIO RAPIDO QUICK CHANGE ADAPTORS

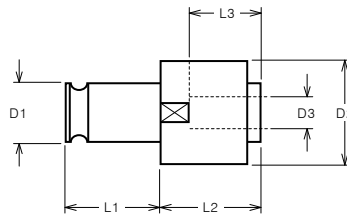


CODICE CODE	PER MASCHI FOR TAPS	Ø GAMBO MASCHIO TAP SHANK DIAM	GRAND SIZE	D1	D2	D3	L1	L2	L3
404100.200	M1-M10	2,5 - 8	0	13	22	2,5 - 8	19,5	7	15
404101.200	M3-M12	3,5 - 11,3	1	19	30	3,5 - 11,3	21,5	7	17
404102.200	M8-M20	7 - 18	2	31	48	7 - 18	35	11	30

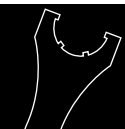
ACCESSORI DI FORATURA E MASCHIATURA DRILLING AND TAPPING ACCESSORIES

PORTA UTENSILI MASCHIATURA
TAPPING TOOL HOLDERS

BUSSOLE A CAMBIO RAPIDO CON FRIZIONE QUICK CHANGE ADAPTORS WITH SAFETY CLUTCH



CODICE CODE	PER MASCHI FOR TAPS	Ø GAMBO MASCHIO TAP SHANK DIAM	GRAND SIZE	D1	D2	D3	L1	L2	L3
404200.200	M1-M10	2,5 - 8	0	13	23	2,5 - 8	19,5	21	15
404201.200	M3-M12	3,5 - 11,3	1	19	32	3,5 - 11,3	21,5	25	17
404202.200	M8-M20	7 - 18	2	31	50	7 - 18	35	34	30



ACCESSORI DI COLLEGAMENTO

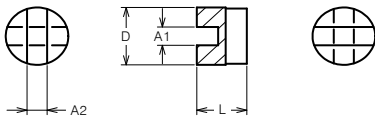
INTERFACING ACCESSORIES



ACCESSORI DI COLLEGAMENTO INTERFACING ACCESSORIES

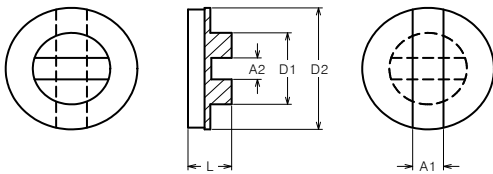
GIUNTI
JOINTS

GIUNTI PER TRASCINATORI JOINTS FOR DRIVER



CODICE	CODE	A1	A2	D	L
416108.006		8	6	25	18
416108.008		8	8	25	20
416108.012		8	12	34	22
416112.012		12	12	34	24
416116.016		16	16	54	33

GIUNTI PER MANDRINI ISO 30-40 JOINTS FOR SPINDLE ISO 30-40

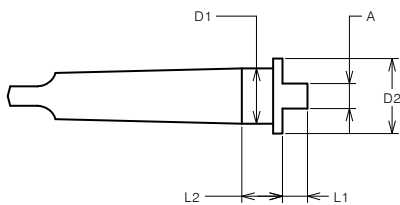


CODICE	CODE	A1	A2	D1	D2	L
416216.008		15,9	8	30	68	20,5
416216.012		15,9	12	40	68	22,5
416216.016		15,9	16	54	68	27

ACCESSORI DI COLLEGAMENTO INTERFACING ACCESSORIES

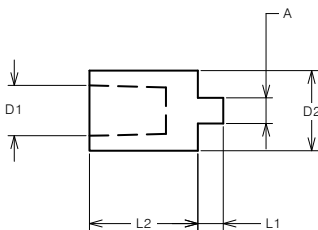
TRASCINATORI
DRIVERS

TRASCINATORI IN CM MORSE TAPER DRIVERS



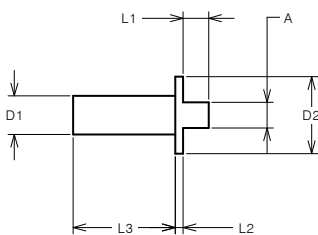
CODICE	CODE	D1	D2	A	L1	L2
415101.008		1	24	8	8	11,5
415102.008		2	24	8	8	13
415103.008		3	24	8	8	8
415104.008		4	24	8	8	7,5
415105.008		5	24	8	8	7,5
415102.012		2	34	12	10	13
415103.012		3	34	12	10	13
415104.012		4	34	12	10	14,5
415105.012		5	34	12	10	7,5

TRASCINATORI IN CONO DIN 238 DIN 238 TAPER DRIVERS



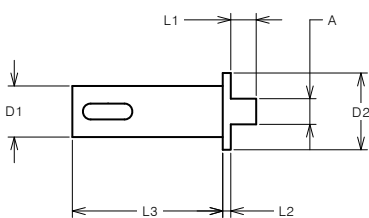
CODICE	CODE	D1	D2	A	L1	L2
415210.008		B10	24	8	8	26
415212.008		B12	24	8	8	31
415216.008		B16	25	8	8	34
415218.008		B18	29	8	8	45
415224.008		B24	34,5	8	8	65
415218.012		B18	29,5	12	10	45
415224.012		B24	38	12	10	65

TRASCINATORI PER MANDRINI A PINZA DRIVERS FOR COLLET SPINDLE



CODICE	CODE	D1	D2	A	L1	L2	L3
415410.008		10	24	8	8	2,5	25
415412.008		12	24	8	8	2,5	32

TRASCINATORI PER MANDRINI DIN 55058 DRIVERS FOR DIN 55058 SPINDLE



CODICE	CODE	D1	D2	A	L1	L2	L3
405312.008		12	24	8	8	2,5	35,5
405316.008		16	24	8	8	2,5	47
405320.008		20	24	8	8	2,5	47
405328.008		28	32	8	8	4	52
405336.008		36	39,5	8	8	4	59
405316.012		16	24	12	10	2,5	47
405320.012		20	29	12	10	2,5	47
405328.012		28	34	12	10	4	52
405336.012		36	39,5	12	10	4	59

ACCESSORI DI COLLEGAMENTO
INTERFACING ACCESSORIES

STOP-BLOCK ANTIROTANTE
 ANTI-ROTATION STOP-BLOCK

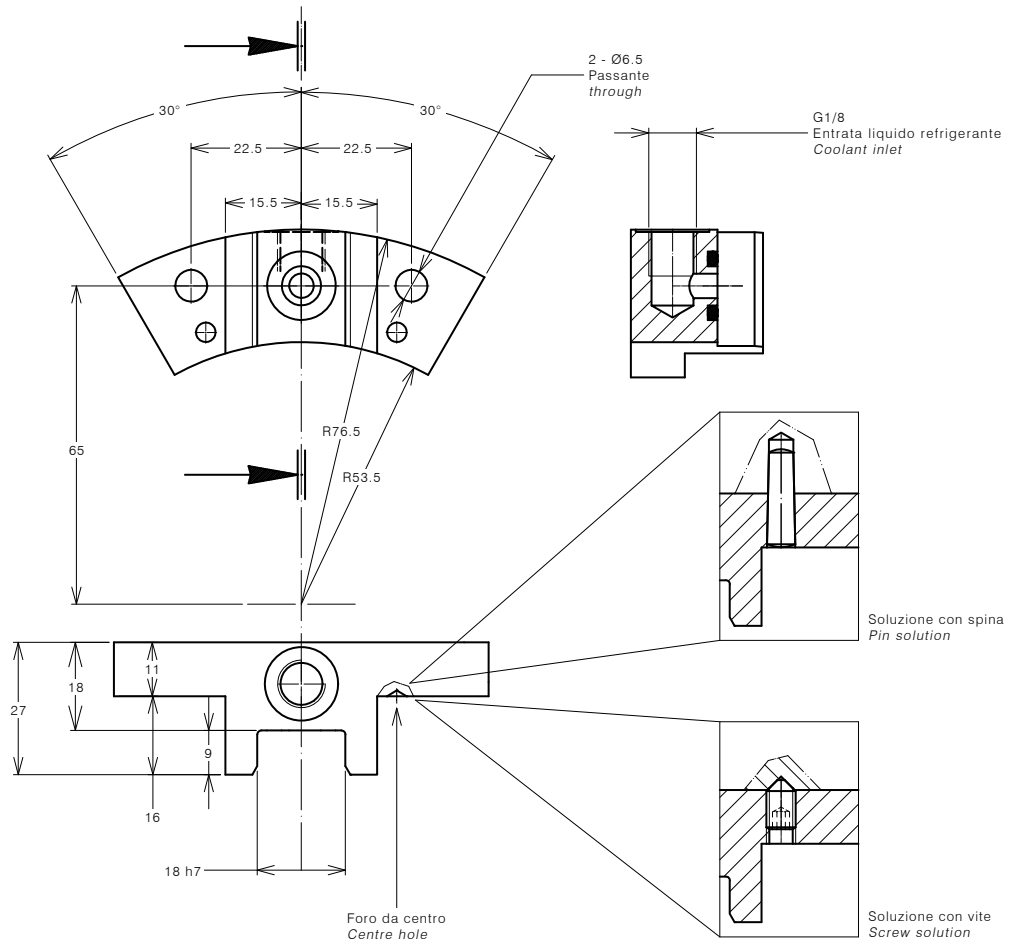
STOP-BLOCK ANTI-ROTANTE CILINDRICO CON PASSAGGIO REFRIGERANTE
CYLINDRICAL ANTI-ROTATION STOP-BLOCK WITH COOLANT WAY

Lo stop-block previene la rotazione delle teste e assicura una perfetta stabilità, precisione di posizionamento e ripetibilità del cambio utensili automatico.

The stop-block avoids the head rotation and ensure a perfect stability, high precision positioning and repeatability of the automatic tool changer.

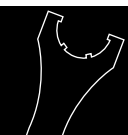
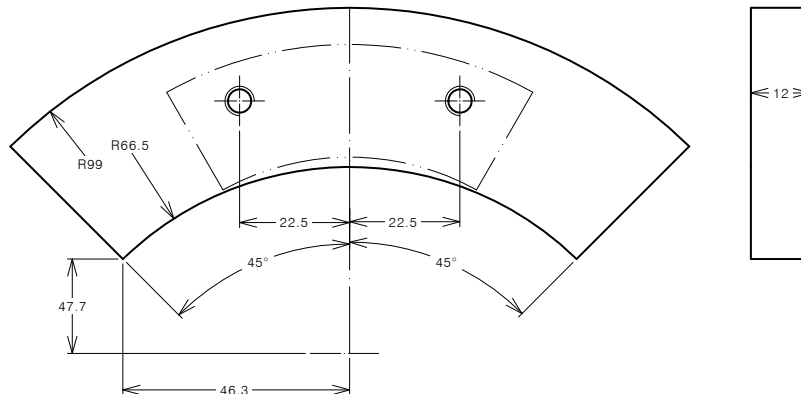
Stop-block anti-rotante cilindrico codice 311201-025

Cylindrical anti-rotation stop-block code 311201-025



Spessore codice 310702-003 (da adattare)

Thickness code 310702-003 (to be adjusted)



ACCESSORI DI COLLEGAMENTO
INTERFACING ACCESSORIES

STOP-BLOCK ANTIROTANTE
ANTI-ROTATION STOP-BLOCK

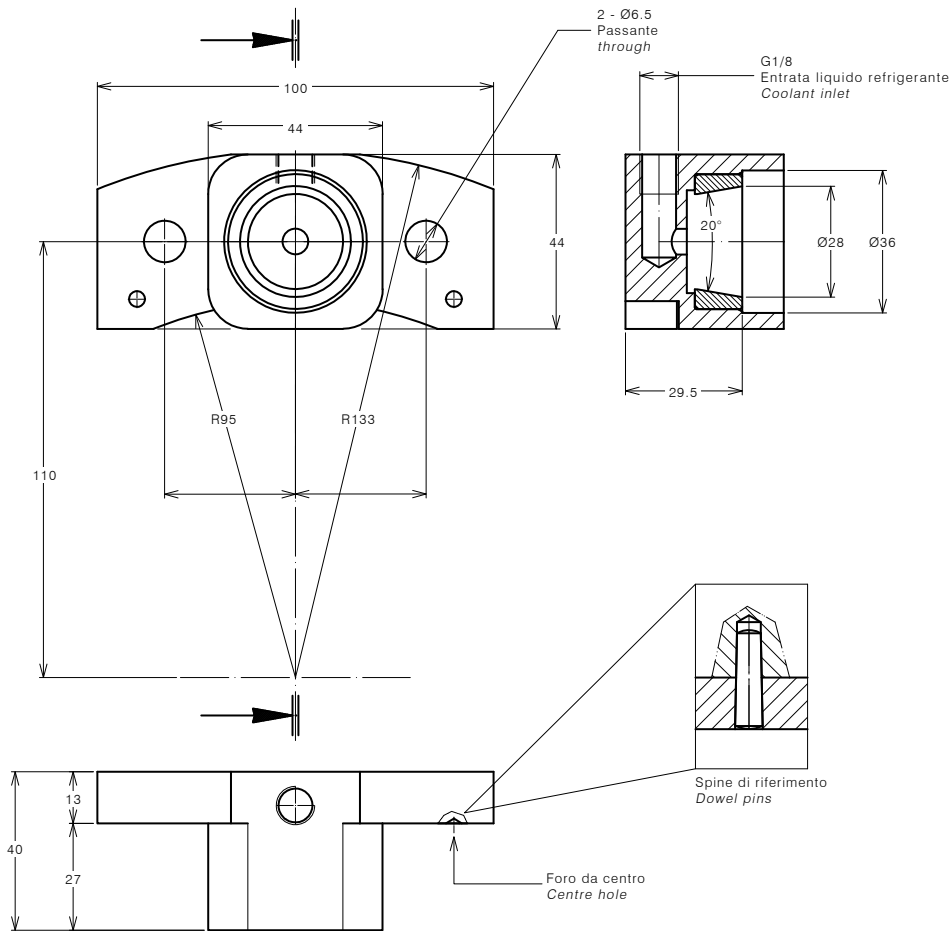
STOP-BLOCK ANTI-ROTANTE CONICO CON PASSAGGIO REFRIGERANTE
CONICAL ANTI-ROTATION STOP-BLOCK WITH COOLANT WAY

Lo stop-block previene la rotazione delle teste e assicura una perfetta stabilità, precisione di posizionamento e ripetibilità del cambio utensili automatico.

The stop-block avoids the head rotation and ensure a perfect stability, high precision positioning and repeatability of the automatic tool changer.

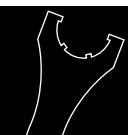
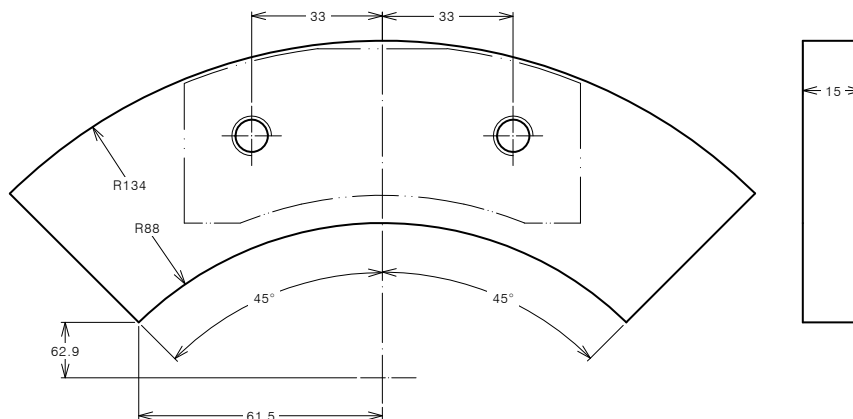
Stop-block anti-rotante conico 311201-026

Conical anti-rotation stop-block code 311201-026



Spessore codice 310702-004 (da adattare)

Thickness code 310702-004 (to be adjusted)



ACCESSORI DI COLLEGAMENTO INTERFACING ACCESSORIES

STOP-BLOCK
STOP-BLOCK

STOP-BLOCK ANTI-ROTANTE SU SPECIFICO DISEGNO ANTI-ROTATION STOP-BLOCK UNDER SPECIFIC DESIGN

Inviatemi il disegno del mandrino macchina per rilevare le quote necessarie alla costruzione delle stop-block.

Please, send us the technical dimension of your machine tool spindle nose in order to design and manufacture the customized stop-block.

